



# KWAR HYDRO-ELECTRIC PROJECT

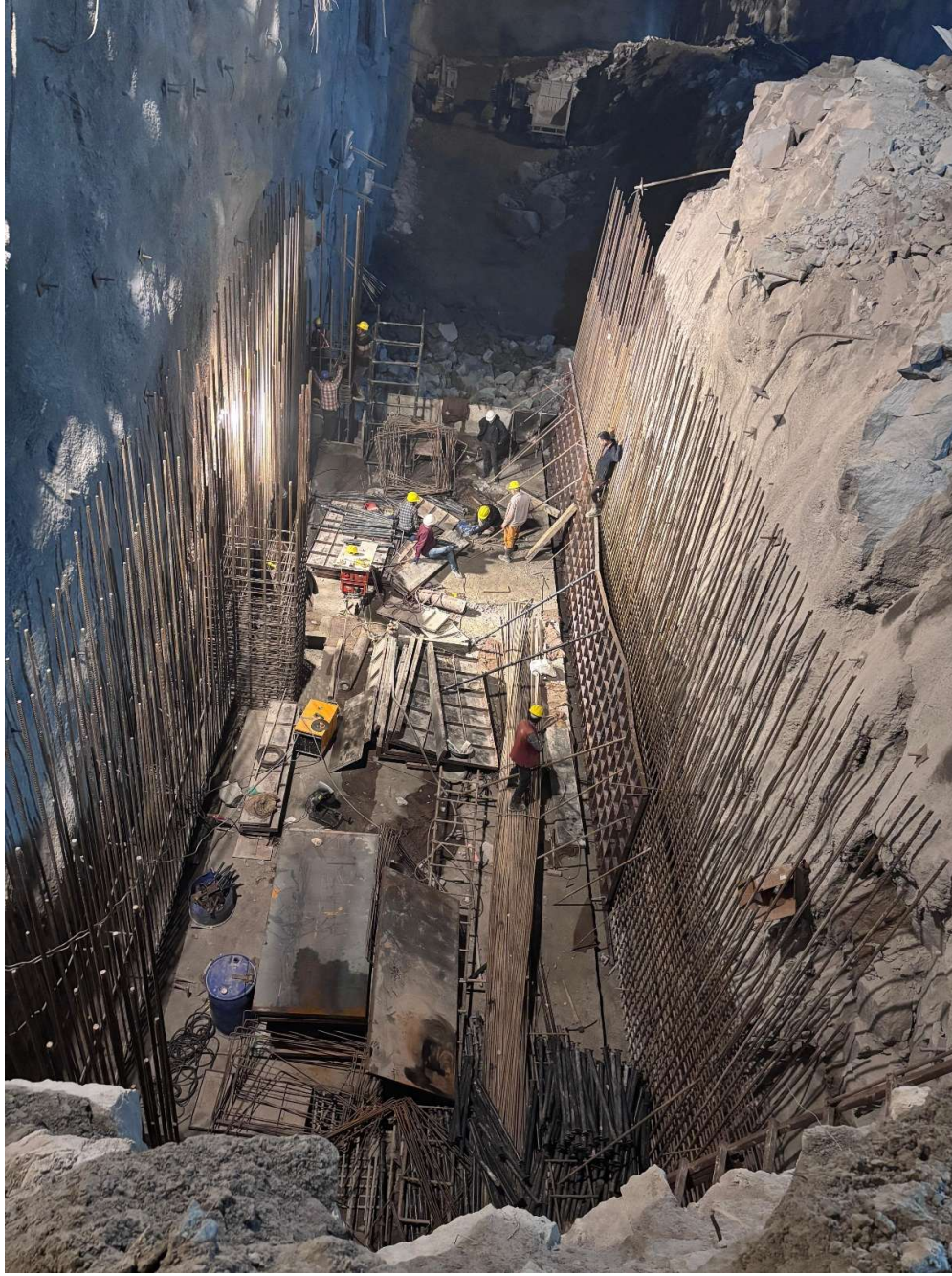
(4 x 135 = 540 MW)



## Monthly Highlights for the Month of Feb'2026



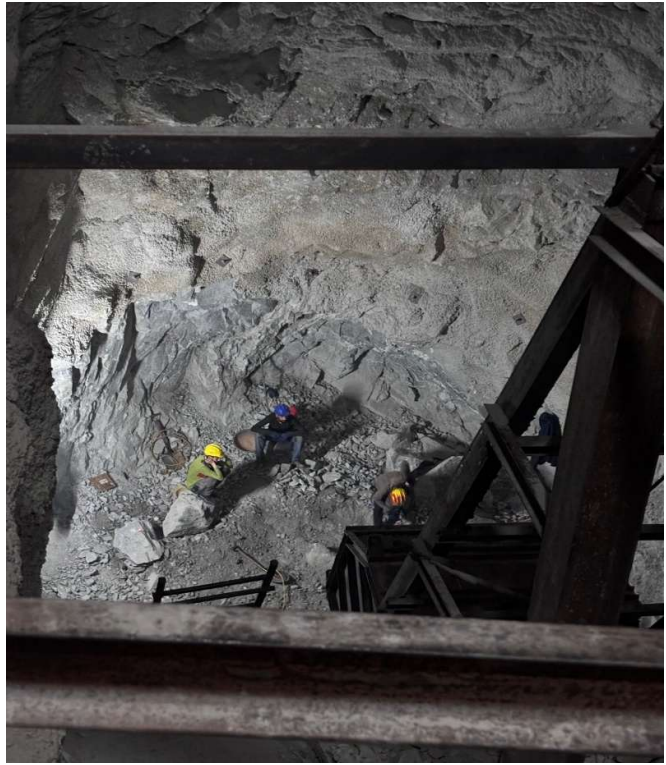
**DAM CONCRETING (UPSTREAM AND DOWNSTREAM VIEWS)**



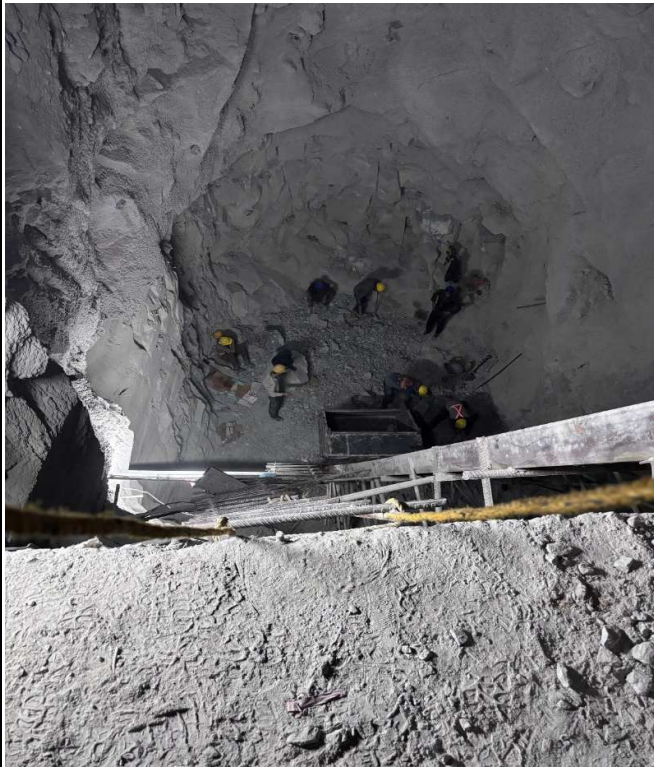
**POWERHOUSE EXCAVATION AND CONCRETING IN ACCESS CUM CABLE GALLERY OF SERVICE BAY**



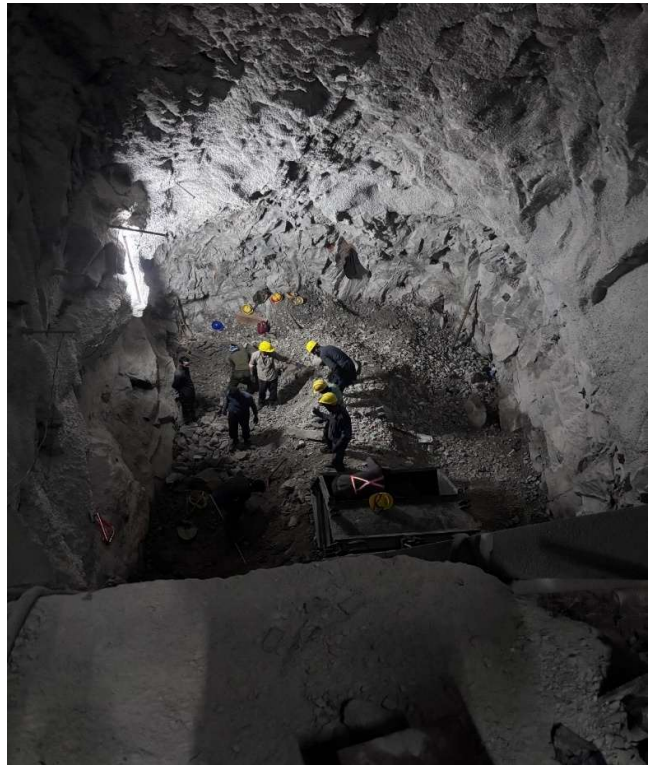
**BUS DUCT #1**



**BUS DUCT #2**



**BUS DUCT #3**



**BUS DUCT #4**



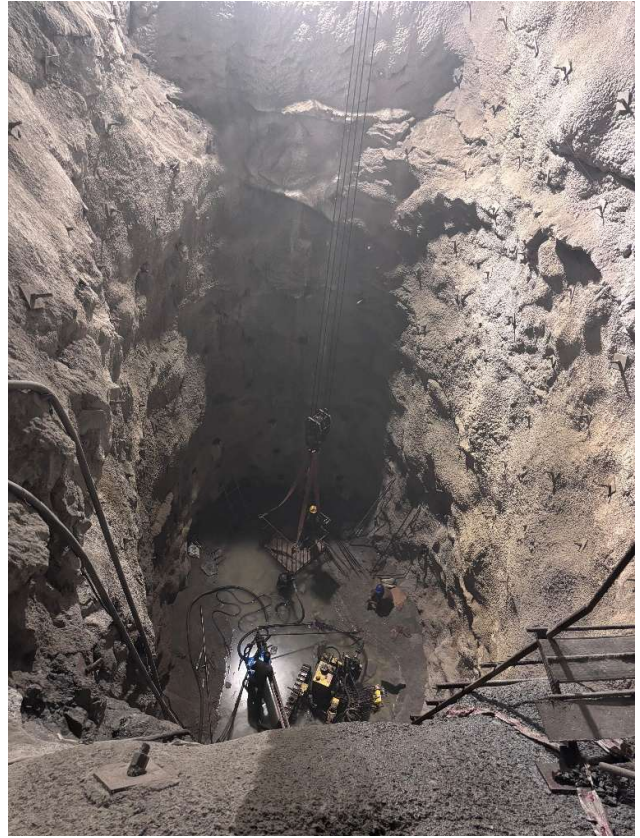
**BRANCH TUNNEL LEADING TO DRAFT TUBE#2**



**BRANCH TUNNEL LEADING TO DRAFT TUBE#3**



**DRAFT TUBE # 4**



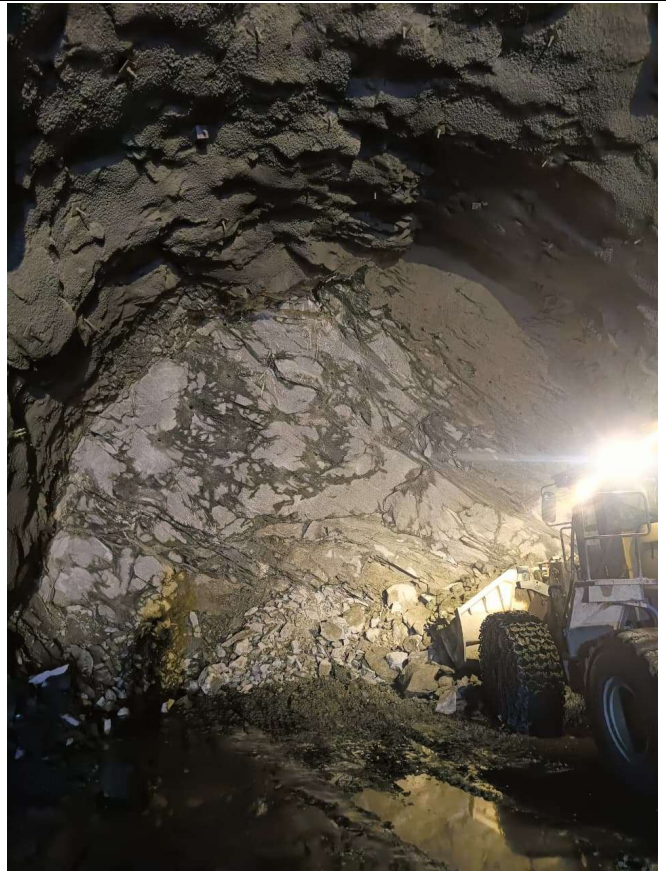
**DRAFT TUBE GATE SHAFT EXCAVATION**



**CONTROL BLOCK EXCAVATION**



**TRT-1 D/S FROM SURGE GALLERY**



**TRT-2 D/S FROM SURGE GALLERY**



**TRT-1 U/S FROM INTERMEDIATE ADIT**



**TRT-1 D/S FROM INTERMEDIATE ADIT**



**TRT-2 U/S FROM INTERMEDIATE ADIT**



**TRT-2 D/S FROM INTERMEDIATE ADIT**



**ADIT TO PS BOTTOM**



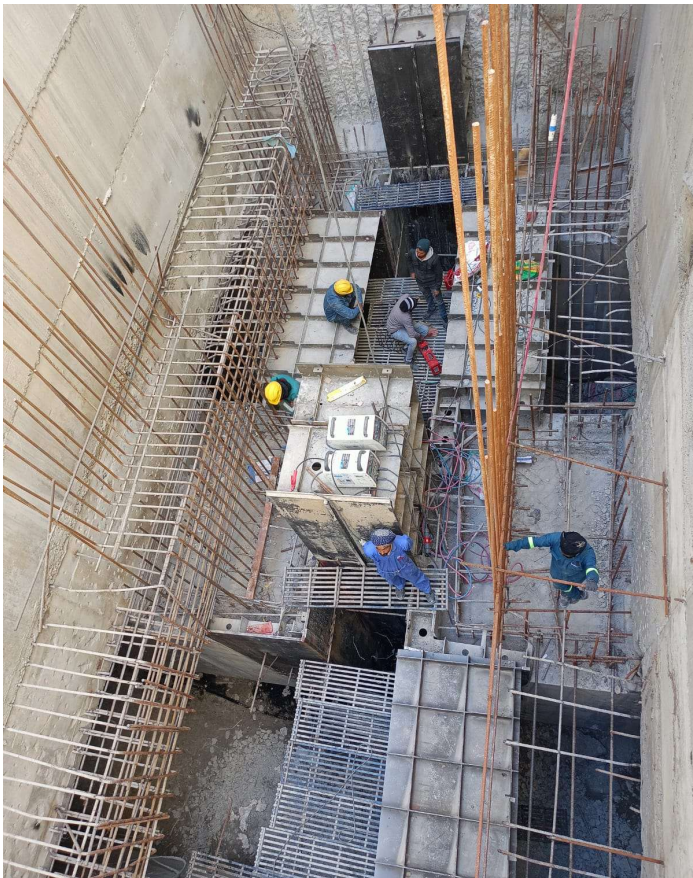
**SURGE GALLERY -2 OVERT LINING**



**ABUTMENT FOR TRT OUTLET BRIDGE**



**ERECTION OF CSG GROOVE LINER AT S1  
AND S2 BLOCK**



**Cumulative Progress/Major Work Activities (Feb'26)**

<b>Sr. No.</b>	<b>Description</b>	<b>Cumulative Progress</b>
<b>1</b>	<b>Dam Concreting</b>	<ul style="list-style-type: none"> <li>• 293546 Cum (39%) out of 750000 Cum achieved</li> </ul>
<b>2</b>	<b>Powerhouse Excavation</b>	<ul style="list-style-type: none"> <li>• 119690 Cum (85%) out of 141000 Cum achieved</li> </ul>
<b>3</b>	<b>Control Block Cavern Excavation</b>	<ul style="list-style-type: none"> <li>• 17200 Cum (76%) out of 17500 Cum excavation achieved</li> </ul>
<b>4</b>	<b>TRT-1</b>	<ul style="list-style-type: none"> <li>• 1875.2 m (67%) out of 2805.13m heading excavation achieved</li> </ul>
<b>5</b>	<b>TRT-2</b>	<ul style="list-style-type: none"> <li>• 1655.6 m (56%) out of 2969.93m heading excavation achieved.</li> </ul>
<b>6</b>	<b>Surge Gallery for TRT-2</b>	<ul style="list-style-type: none"> <li>• Heading excavation completed on 23.11.2025</li> <li>• 738m (95%) out of 776m benching excavation achieved.</li> </ul>
<b>7</b>	<b>VPS-2, VPS-3 &amp; VPS-4</b>	<ul style="list-style-type: none"> <li>• VPS-1 5m (9%) out of 55m excavation achieved.</li> <li>• VPS-2: 20.1m (24%) out of 84m excavation achieved.</li> <li>• VPS-3: Excavation Completed.</li> <li>• VPS-4: Excavation Completed.</li> </ul>

**HOP Comments**

Package Wise Major accomplishments in the Month of Feb'26 are as under:

**Surface Excavation Works:**

**Dam Works:** In Dam concreting, project has achieved cumulative concreting of 2,93,546 cum out of total estimated quantity of 7,50,000 cum, i.e an overall progress of approximately 39%. During the month of Feb'26, the project achieved concreting of 25,413 cum. Currently, concreting works are in progress in 07 blocks with maximum block level reached upto: S1 block (EL 1319.0m), S2 block (EL 1322m), S3 block (EL 1321m), S4 block (EL 1320 m), S5 block (EL 1323.5m), R1 block (El:1317.0m) & R2 block (EL 1309.5m).

**Excavation of Vertical Pressure Shafts (VPS):** Excavation of VPS-3 & VPS-4 has been completed whereas 20.1 m & 5.0m excavation of VPS-2 & VPS-1 out of total depth of 84m and 55m respectively has been completed till Feb'2026.

**Underground Excavation Works:**

**Underground Powerhouse & Control Block:** Excavation of Powerhouse Cavern down to EL ± 1240m has been completed in the major portion of the Powerhouse whereas, pit excavation for Draft Tube-4 has been completed up to final level of 1229.55 m.

Raft concreting of Access cum Cable Gallery (Finish Level El:1248.85 m) from Power House to Control block has been completed.

Rock support on sidewalls of Powerhouse Cavern is under progress. Drilling, insertion and end grouting for Cable Tendons in the Upstream and Downstream walls of PH Cavern at EL 1260.4/1261.4m have been completed with padding and stressing.

Project is committed to complete excavation of Powerhouse Cavern as per the scheduled timeline.

Excavation of Control Block has been completed down to the bottom level (EL 1247.85m) and presently excavation of sump portion is under progress. Excavation is expected to be completed in all respect in March'2026.

**Transformer Cavern:** Complete excavation of the Transformer Cavern down to EL 1309m has been completed. Stressing of Cable Tendons installed EL 1318 m in the upstream and downstream walls of the Transformer Cavern have been completed. Installation of Cable Tendons at EL 1312m is under progress. Excavation of Upper horizontal portions ( $\pm 6$ m) and about 14m in the inclined portions of all the Bus Ducts from Transformer Cavern have been completed. Excavation of inclined portion of all the four Bus Ducts is under progress. Excavation of Draft Tube Gate Shafts is also in progress.

**Excavation of TRTs:** Despite significant geological and execution challenges including presence of Class-IV Rockmass in more than 50% stretch, Project has successfully completed approx. 3530 m heading excavation of TRTs out of total length of 5776m upto Feb'2026. Excavation of TRT-1 and TRT-2 is undertaken cautiously with concurrent installation of support considering poor ground conditions. Excavation of Downstream Link Adit between TRT-1 and TRT-2 has also been started and 5m excavation has been completed.

**Surge Gallery-2 (776m) & APSB (412m):** Benching excavation of Surge Gallery for TRT-2 has almost been completed. Overt lining of Surge Gallery-2 has started in February'26 and 24 m lining has been completed. Excavation of Adit to Pressure Shaft Bottom (APSB) is also under progress and about 169m excavation has been completed.

**TRT Outfall/Permanent Bridge for TRT Outfall:**

Raft Concreting for Right Bank Foundation of TRT Outlet Bridge has been completed up to the deck level in December'2025 and launching work has been taken up with erection of launching towers on both the abutments. Simultaneously, installation of additional support in the hillslope overlooking and surrounding the right bank abutment is under progress. Project is confident to make the Bridge operational by May'26.

**HM works:**

Erection of Side Liner in S1 block has been completed. Further in S2 block erection upto EL 1307m has been completed by HM Contractor – M/s OM Infra Limited.

**CAPEX:**

CAPEX Target in Feb'26 – Rs. 96.65 Cr.

CAPEX Utilized in Feb'26 – Rs. 82.91 Cr.

Cumulative CAPEX Utilized till Feb' 26 - Rs. 1498.28 Cr.

CAPEX Target of FY 2025-26 - Rs. 782.33 Cr.

CAPEX Utilized in FY 2025-26 (till Feb'26) – Rs. 580.25 Cr.

\*\*\*\*\*

