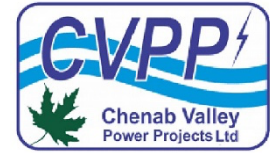




KWAR HYDRO-ELECTRIC PROJECT
(4 x 135 =540 MW)



Monthly Highlights for the Month of April '2026



DAM CONCRETING (UPSTREAM AND DOWNSTREAM VIEWS)



POWERHOUSE EXCAVATION



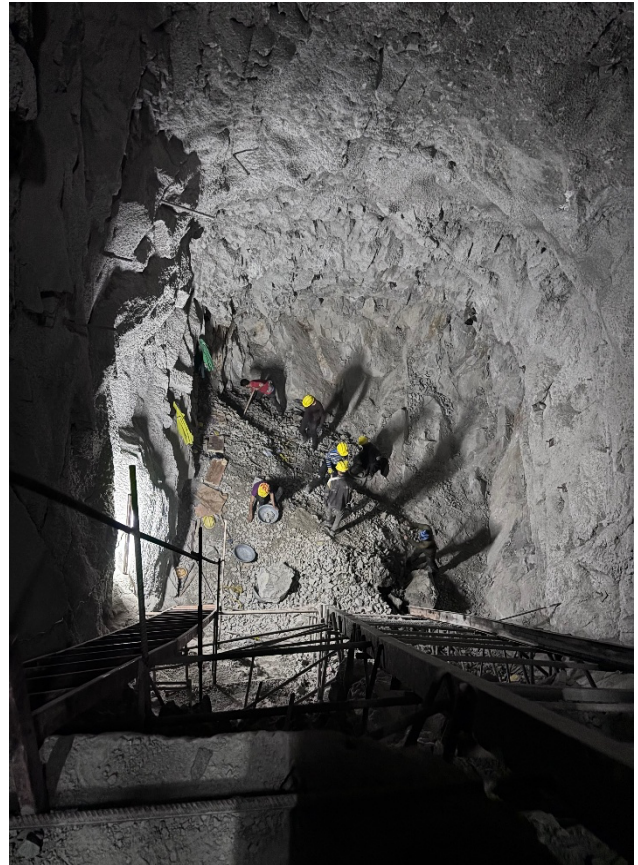
CB TO PH ACCESS GALLERY



ADIT TO PS BOTTOM



BUS DUCT #1



BUS DUCT #2



BUS DUCT # 3



BUS DUCT # 4



DRAFT TUBE GATE SHAFT-4



Branch Tunnel -2



Branch Tunnel 3



**TRT-1 D/s FROM SURGE
GALLERY**



**TRT-2 D/s FROM SURGE
GALLERY**



**TRT-1 D/s FROM
INTERMEDIATE ADIT**



**TRT-1 U/s FROM
INTERMEDIATE ADIT**



**TRT-2 D/s FROM
INTERMEDIATE ADIT**



**TRT-2 U/s FROM
INTERMEDIATE ADIT**



SURGE GALLERY-2



DRAFT TUBE # 4



**ERECTION OF BOTTOM
CHORD AT TRT OUTLET
BRIDGE**



WELDING WORK IN CSG LINER IN S1 & S2 BLOCK

Cumulative Progress/Major Work Activities (April'26)

| Sr. No. | Description | Cumulative Progress |
|----------------|--|--|
| 1 | Dam Concreting | <ul style="list-style-type: none"> • 3,48,645 Cum (46.4%) out of 750000 Cum achieved. |
| 2 | Powerhouse Excavation | <ul style="list-style-type: none"> • 1,34,230 Cum (98.7%) out of 136000 Cum achieved. |
| 3 | Control Block Cavern Excavation | <ul style="list-style-type: none"> • 17200 Cum (98.7%) out of 17500 Cum excavation achieved. |
| 4 | TRT-1 | <ul style="list-style-type: none"> • 2053.3 m (73.2%) out of 2805.13m heading excavation achieved |
| 5 | TRT-2 | <ul style="list-style-type: none"> • 1839.0m (61.92%) out of 2969.93m heading excavation achieved. |
| 6 | Surge Gallery for TRT-2 | <ul style="list-style-type: none"> • Heading excavation completed on 23.11.2025. • Benching excavation completed on 13.03.2026. • Concrete Lining completed -90m. |
| 7 | VPS-2, VPS-3 & VPS-4 | <ul style="list-style-type: none"> • VPS-1 5m (9%) out of 55m excavation achieved. • VPS-2: 22.2 (26.4%) out of 84m excavation achieved. • VPS-3: Excavation Completed. • VPS-4: Excavation Completed. |
| 8 | Adit to PS Bottom | <ul style="list-style-type: none"> • 243 m (58.9%) out of 412 m excavation achieved. |
| 9 | Bus Ducts | <ul style="list-style-type: none"> • BD 1: 39.1 m (46%) out of 85 m excavation achieved. • BD 2: 42.4 m (50%) out of 85 m excavation achieved. • BD 3: 43.8 m (52%) out of 85 m excavation achieved. • BD 4: 40.5 m (48%) out of 85 m excavation achieved. |

HOP Comments

Surface Excavation Works:

Dam Works: In Dam concreting, project has achieved cumulative concreting of 3,48,645 cum out of total estimated quantity of 7,50,000 cum, i.e. an overall progress of approximately 46.4%. In the month of April'26, 32,796 cum concrete has been poured in dam which is highest since the commencement of dam concreting. For the first time Project has surpassed 30,000 cum monthly dam concreting. Currently, concreting works are in progress in 08 blocks with maximum block level reached upto: S1 block (EL 1321.5m), S2 block (EL 1322m), S3 block (EL 1324.6m), S4 block (EL 1320 m), S5 block (EL 1333.7m), R1 block (EL 1331.5m), R2 block (EL 1330m) & R3 block (EL 1321.5m).

Excavation of Vertical Pressure Shafts (VPS): Excavation of VPS-3 & VPS-4 has been completed whereas 22.2 m & 5.0m excavation of VPS-2 & VPS-1 out of total depth of 84m and 55m respectively has been completed till Apr'2026.

Underground Excavation Works:

Underground Powerhouse & Control Block: Excavation of Powerhouse Cavern down to EL \pm 1240m has almost been completed. After completion of pit excavation for Draft Tube-4 up to final level of 1229.55 m, PCC and Raft concreting has been completed and concreting of draft tube wall is under progress. Earth mat, embedment and seamless/ ERW pipes as per requirement of E&M Contractor have also been installed.

Concreting of column and wall in the Access cum Cable Gallery to Control block is going on in Power house.

Rock support on sidewalls of Powerhouse Cavern is under progress. Drilling, insertion, end grouting and padding of Cable Tendons in the Upstream and Downstream walls of PH Cavern at EL 1252 have been completed and padding & stressing have been taken up.

Excavation of Control Block has been completed down to the bottom level (EL 1247.85m).

Transformer Cavern: Complete excavation of the Transformer Cavern down to EL 1309m has been completed. Stressing of Cable Tendons installed EL 1318 m in the upstream and downstream walls of the Transformer Cavern have been completed. Installation and grouting for Cable Tendons at EL 1312m has been completed whereas padding & stressing is balance. Excavation of Upper horizontal portions (\pm 6m) and about 18m in the inclined portions of all the Bus Ducts from Transformer Cavern have been completed. Excavation of inclined portion of all the four Bus Ducts is under progress. Excavation of Draft Tube Gate Shafts 2 & 4 is also in progress.

Excavation of TRTs: Despite significant geological and execution challenges including presence of Class-IV Rock mass in more than 50% stretch, Project has successfully completed approx. 3892 m heading excavation of TRTs out of total length of 5776m upto Apr'2026. Excavation of TRT-1 and TRT-2 is undertaken cautiously with concurrent installation of steel rib support considering poor ground conditions. Excavation of 45m long Downstream Cross Passage Link Adit between TRT-1 and TRT-2 has also been completed which will lead to commencement of Benching Excavation of TRT-2 from May'2026 onwards.

Surge Gallery-2 (776m) & APSB (412m): Benching excavation of Surge Gallery for TRT-2 has been completed. Overt lining of Surge Gallery-2 has started in Feb'26 and 204 m lining has been completed. Excavation of Adit to Pressure Shaft Bottom (APSB) is also under progress and about 243m excavation out of total length of 412m has been completed.

TRT Outfall/Permanent Bridge for TRT Outfall:

Raft Concreting for Right Bank Foundation of TRT Outlet Bridge has been completed up to the deck level in December'2025 and erection of launching towers on both the abutments has been completed. Erection of Bottom Chords is presently under progress. Installation of additional support in the hillslope overlooking and surrounding the right bank abutment is under progress. Launching of bridge is expected to commence in May'26.

HM Works:

Erection of Side Liner in S1 block has been completed. Further in S2 block erection up to EL 1309m has been completed by HM Contractor – M/s OM Infra Limited.

E&M Works:

Subsequent to completion of Excavation of Draft Tube Pit-4 and handing over to the E&M Contractor for subsequent activities. Earthing work and installation of embedment have been completed. Installation of seamless/ ERW pipes is also being taken up.

Despatch of Draft Tube (DT) liner for Unit #4 has been started. Fabrication of the Draft Tube (DT) liner for Unit #3 has been completed and inspection shall be carried out at the manufacturer's premises shortly.

CAPEX:

CAPEX Target in Apr'26 – Rs. 121.95 Cr.

CAPEX Utilized in Apr'26 – Rs. 52.87 Cr.

Cumulative CAPEX Utilized till Apr' 26 - Rs. 1729.92 Cr.

CAPEX Target of FY 2026-27 - Rs. 1351.16 Cr.

CAPEX Utilized in FY 2025-26 (till March'26) – Rs. 759.02 Cr.

